

JMX



HEPA
filter



FIMAP
FLEET MANAGEMENT



LI-ION
BATTERIES

Just what you need, in its most essential form!

 **FIMAP**[®]



The essentials for professionals

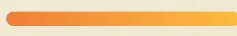
JMx is a scrubbing machine in which the quality and cleaning performance of the Performance Line are condensed into an effective and advantageous model.

Even with its simple set-up, it meets the demands of

**robustness,
high quality materials,
ergonomics,
ease of maintenance
and results,**

to give you in an essential form everything you need to achieve the standards of professional cleaning.

WORKING AUTONOMY

 up to **2**
hours

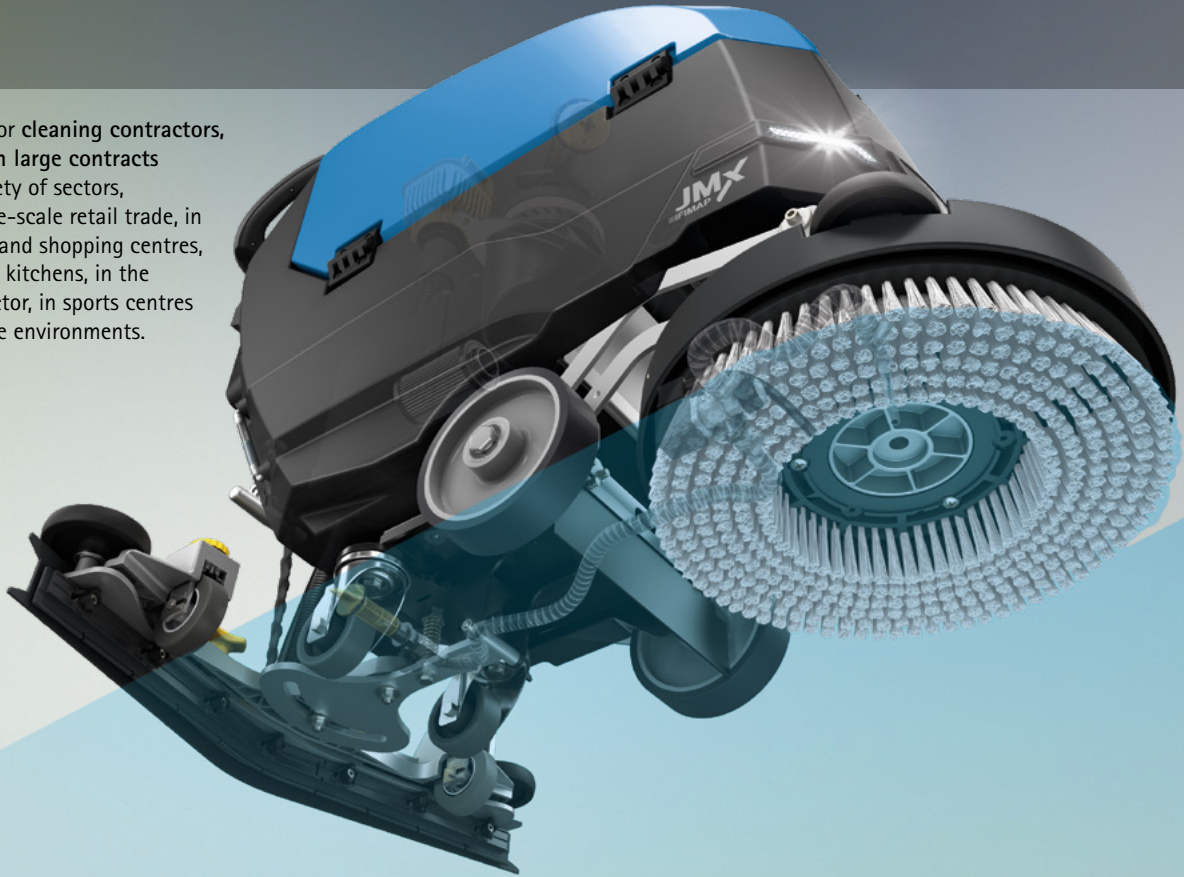


DISC

with plastic brush head with 1 disc brush
measuring 430 mm or 500 mm

Reference sectors

It is suitable for cleaning contractors, for bidding on large contracts and for a variety of sectors, including large-scale retail trade, in supermarkets and shopping centres, in commercial kitchens, in the hospitality sector, in sports centres and healthcare environments.



LARGE-SCALE RETAILING



SHOPPING CENTRES



CLEANING AND
MULTI-SERVICE CONTRACTORS



HO.RE.CA



SPORTS CENTRES



TRANSPORTATION



HEALTH



Designed with the operator in mind

The user-centred design enables convenient use, effortless cleaning operations and easier maintenance.

The straightforward interface allows you to adjust detergent solution and suction according to actual requirements.

It includes an hour meter with which you can check the cleaning and running times of the machine.



ECO MODE

The Eco Mode device activates a resource-saving cleaning mode, ideal in maintenance cleaning, to keep consumption low.



The design you need: robust and functional



ROBUST DESIGN

The design meets the requirements of robustness, to protect the machine and ergonomics, to support the operator.

DURABLE PLASTICS

The plastics are solid and durable, moulded in high-density polyethylene. They protect internal components and mechanical parts in the event of accidental impacts, helping to preserve the machine's functionality over time.

CORROSION-RESISTANT MATERIALS

The squeegee is made of plastic with aluminium support, which are corrosion-resistant materials.





Maintenance is convenient, so you save time

YELLOW COLOUR CODE

The yellow colour guides the operator in finding the parts to be cleaned regularly at the end of the shift, so they will not be forgotten. Regular maintenance ensures efficiency and consistency in cleaning performance.



TOUCH POINT
MAINTENANCE



0.3 μm
99.9% efficiency

Before being returned to the environment, the suctioned air is filtered through a Hepa filter, capable of retaining dust particles down to 0.3 μm . JMX therefore guarantees the return of clean air even from fine dust, making the environment that is being cleaned healthier.



DESIGN

The accessible design makes easier to perform maintenance on the machine and to inspect the battery compartment, which opens fully. Adjustments can be made without the need for tools.

Reduces waste so resources last longer



ECO MODE

Eco Mode is the work mode suitable for frequent or maintenance cleaning, when the floor is not particularly dirty, and the consumption of water, detergent and energy can be reduced. By pressing the Eco Mode button, the functions are simultaneously activated at the lowest level and the operator can immediately start working.



LITHIUM BATTERIES

Lithium batteries are far more convenient to use than the conventional ones, they are lighter and consume less power. They are more efficient in managing energy, delivering consistent power, without failure, until the final discharging phase. They need less time for a complete charge



up to **35%**
It reduces energy consumption by
FES-FIMAP ENERGY SAVER

The study on the correct sizing of engines according to the type of model and work for which it is intended, together with state-of-the-art design and production methods and the support of new technologies, have allowed a rationalisation of the number of components and weight of the machine that increases efficiency and autonomy, reducing consumption by up to 35%.

and provide the extraordinary advantage to be charged anytime. Partial charges make the machine virtually always available. This provides the maximum flexibility in scheduling cleaning operations, thus improving productivity.



Connect to JMX and keep your cleaning tasks under control

Track the performance of your fleet easily from your smartphone, with the My.Machine app.

Enter the profile of each machine to see where it is, whether the planned cleaning schedule is being followed, and whether anything unexpected has occurred. You can check the list of maintenance tasks carried out, the recharges made and any issues that have arisen, to always be in full control of the situation and keep productivity high.



FIMAP FLEET MANAGEMENT

Choose your connection!

You can choose between 2 types of FFM depending on the type of network you want to use to transmit the data:



FFM **WI-FI**

This is the easiest and most cost-effective version, that uses the Wi-Fi network already available in the building that is being cleaned.



FFM **GSM**

This is useful when there is no Wi-Fi network available in the facility to be cleaned.

Data transfer is ensured by the SIM network installed on the machine.



The control panel



SUSTAINABLE CLEANING



DETERGENT SOLUTION
ADJUSTMENT



BRUSH COUPLING / UNCOUPLING



VACUUM ADJUSTMENT

OPTIONALS AND ACCESSORIES

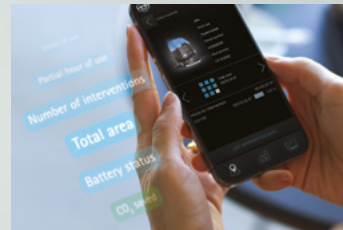
OPTIONALS



HEPA filter



Recycled plastic tanks

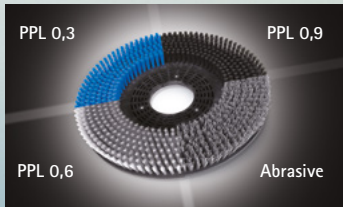


FFM-FIMAP FLEET MANAGEMENT

ACCESSORIES

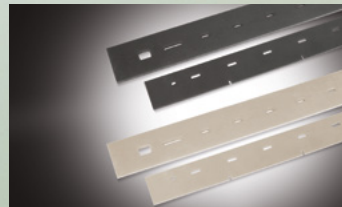


Splash guards



A wide choice of disc brushes in PPL is offered, available in thicknesses from 0.3 to 0.9 cm. These offer the perfect solution for dealing with any type of dirt on any floor.

Abrasive brushes:
Ideal for heavy duty cleaning on industrial surfaces.

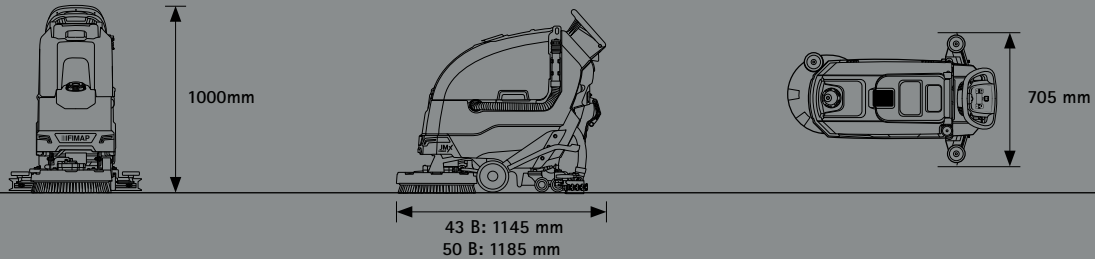


Rear squeegee rubber blades
33 SHORE (PARA)
For maintenance cleaning of smooth floors.
40 SHORE (PARA)
For stubborn dirt on floors with joints.
POLYURETHANE
For heavy duty cleaning on industrial floors, even with wide gaps.

OPTIONAL AND STANDARD EQUIPMENT

USER EXPERIENCE	JMx 43/50 B
- Membrane control panel	•
- Eco Mode	•
COMFORT	
Hour meter	•
Cleaning solution level indicator	•
Automatic brush coupling/uncoupling	•
Noiseless suction	•
PRODUCTIVITY	
Water flow selector	•
FFM (Fimap Fleet Management)	○
Plastic squeegee and aluminium squeegee support	•
Splash guard rubber blade	○
SAFETY	
Driving LED headlights (front)	•
ENVIRONMENT	
Recycled plastic tanks	○
HEPA filter	○
FNC (Fimap Noise Canceling)	•
FES (Fimap Energy Saver)	•
• STANDARD	○ UPON REQUEST

DIMENSIONS AND TECHNICAL DATA



TECHNICAL DATA - JMx		SINGLE DISC	
		43 B	50 B
Productivity theoretical	up to sqm/h	1591	1850
Estimated coverage	up to sqm/h	1075	1250
SCRUBBING SYSTEM			
Working width	mm	430	510
Brush motors	(no.) V/W	(1) 24/500	
Brush rpm	rpm	140	
Pressure on the brushes	kg	20	21,5
TANK AND RECOVERY SYSTEM			
Solution tank	l	30	
Recovery tank	l	33	
Suction motor	V/W	24/422	
Vacuum water lift	mbar	180	
BATTERIES			
Supply/traction	V/Hz	24/semi aut.	
Batteries	(no.) V/Ah C20	(2) 12/75 AGM (2) 12/65 GEL (1) 24/30 Li-ion (1) 24/50 Li-ion	
Battery run time*	up to h	55' (Li-ion) 2 (AGM)	
SPECIFICATIONS			
Machine dimensions (L x h x a)	mm	1145 1000 590	1185 1000 590
Squeegee width	mm	705	
Machine weight empty without batteries	kg	68,7	70,1
Machine weight empty with batteries	kg	119,7	121,1
GVW (Gross Vehicle Weight)	kg	147,7	149,1
Sound level (ISO 11201) - Eco Mode	dB (A)	< 70	

* Run times are based on continuous scrubbing run times

SERVICES

CONSULTING AND PLANNING



We put our experience at your service, to help you realize the cleaning project perfect you. We suggest you the best solutions to make costs decrease and service quality increase.

SET-UP



We can help you set up your machines in order to make them meet specifically the requirements of the sites of your project, allowing you to always have control over costs and results.

AUTHORIZED WORKSHOP NETWORK



The Fimap Authorised Workshop network spans the globe, so you can enjoy the peace of mind of finding a professional support wherever your business is.

CONFIGURATION



Your business is unique, only a customized fleet can lead you to better results. We will help you find the configurations that best fit the specific requirements of your cleaning sites, in order to optimize processes and lower costs.

TRAINING COURSES



Fimap Academy offers courses for all levels, from the correct use of machines and technologies, up to the management of sites and tenders, helping you to make your service really competitive.

MAINTENANCE AND REPAIR



With our service packs, we help you to ensure your business is always operational. Our technicians take care of monitoring the machines health status and know how to intervene quickly and effectively when needed.

CERTIFICATIONS



AWARDS



FINANCIAL SOLUTIONS



You can choose to use the fleet in different ways. We can advise you on the best financial solution for your business, so that you can get the quality of the Fimap world at the most convenient conditions for you.

DIGITAL FLEET MANAGEMENT SYSTEM



With Fimap Fleet Management everything is under your control. You can have a complete overview of the service provided and find out the improvements that can be made, basing your considerations on real data, always available via the MyMachine app or FFM website.

GENUINE SPARE PARTS



Get the most out of your machines, choose the reliability of Fimap original spare parts. They are designed together with the machines, so they perfectly fit them thus guaranteeing the highest quality of performance.

For any additional information or for a demo please contact your usual Fimap dealer


www.fimap.com

FIMAP spa - Via Invalidi del Lavoro, 1 - 37059 S. Maria di Zevio - Verona - Italy - Tel. +39 045 6060411 - E-mail: contact@fimap.com

