

Professional Line



The cleaning specialists for large-sized surfaces

 **FIMAP**[®]
Italian customized cleaning

Professional Line

Professional Scrubbing Machines,
Sweeping Machines, Vacuum Cleaners,
Single Disc Machines

The professional machines of the Fimap Professional Line
are technologically advanced machines suitable
for any type of cleaning task

In particular, scrubbing machines
and sweeping machines are ideal
for cleaning areas OVER 1000 sq.m.

The Professional Line machines of Fimap are ideal for cleaning in environments such as:

Cleaning contractors

Hospitality

Healthcare

Educational

Distribution

Automotive

Corporate

Sport

Food&beverage

Military

Medium and large-sized.

Hotels, resorts, cruisers, ferries.

Nursing homes, retirement homes, public and private hospitals.

Schools, universities, religious institutions.

Supermarkets, hypermarkets, shopping centres, shipping agents, department stores,
household appliance shops.

Car showrooms, machine shops, car body shops.

Private enterprise.

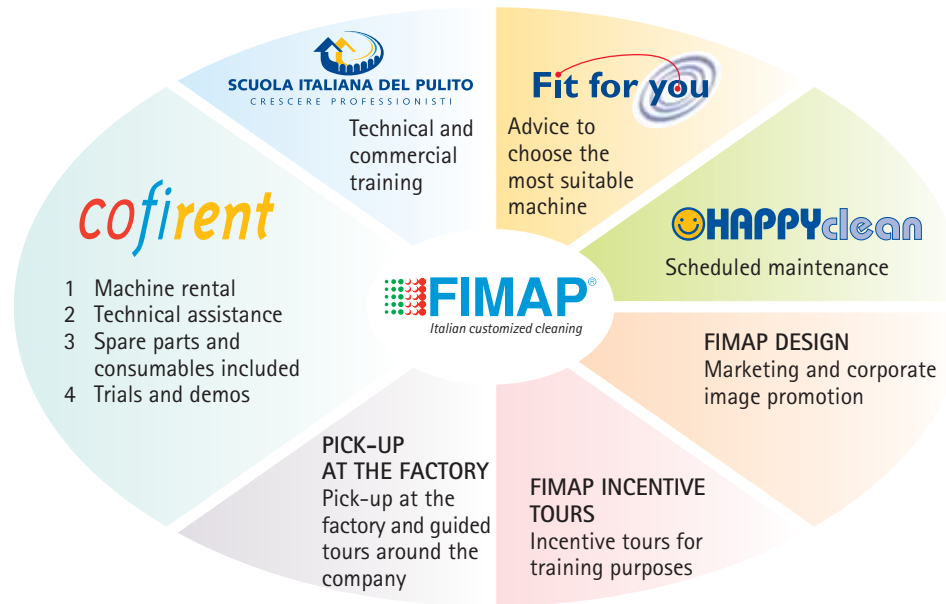
Stadiums, sports halls, athletic tracks, sports centres.

Slaughterhouses, stores, fruit warehouses, large canteens&kitchens.

Canteens, refectories, barracks, firing ranges.



Fimap offers a wide range of customised services to its distribution network



COFIRENT: Area dedicated to Customer Service. It takes care of training, demos, warranties, technical documentation and after-sale services;

ITALIAN SCHOOL OF CLEANING: Customised training to support Customers through courses for professional development of co-operators within the company: managers, technicians, sales staff. Technical training, commercial and sales training, meetings for retailers and meetings for technicians and sales staff;

FIT FOR YOU: It provides an accurate requirement analysis and suggests the machine model that is most suitable to solve the specific case;

HAPPY CLEAN: Options for scheduled machine maintenance depending on the number of operating hours:
BASIC, STANDARD AND PROFESSIONAL
A series of customised check-ups are scheduled to guarantee continuous and excellent machine efficiency;

FIMAP DESIGN: Fimap can also provide customers with promotional tools to set up their points of sale and exhibition booths. On request, the following items are also available: Illuminated signs, display panels, posters, brochures, catalogues, product videos, mailings, neck straps, pens etc

Furthermore, Fimap stickers for customized vans can also be requested as well as the exclusive working uniform for specialised technicians;

FIMAP INCENTIVE TOURS: Every year Fimap organises an incentive tour for its distribution network as an opportunity to discussion and work together as well as to share moments of relaxation and amusement;

PICK-UP AT THE FACTORY: At Santa Maria di Zevio (Verona - Italy) the brand new Fimap centre. Here, not only customers can pick up their brand new machines, but they can also learn about the operating features of our machines thanks to the demos that are performed by our internal technicians.



THANKS TO THE NEW FSS AND FNC SYSTEMS, FIMAP RESPECTS THE ENVIRONMENT AND CLEANING OPERATORS TOO



FSS, FIMAP SOLUTION SAVER is the new water and detergent dosing control system that has been devised and designed by FIMAP for its scrubbing machines

With so many advantages.

- Separate control of water and detergent dosing. Optimised use of the detergent solution depending on the type of dirt
- 50% water saving
- 30% detergent saving
- Thanks to the FSS, any type of detergent can be used
- Management cost saving
- Thanks to the FSS, different types of detergent can be used and substituted also while the machine is operating
- Increased productivity and better cleaning performance
- This system ensures best versatility with any type of dirt
- Possibility to set the machine on a specific operating programme



FNC, FIMAP NOISE CANCELLING is the new system to guarantee acoustic safety for the operators

- FNC drastically reduces noise emissions of the machines thanks to the double insulated chamber where the suction motors are accommodated
- FNC eliminates the stress of operators due to noise pollution, thus increasing his/her productivity
- Thanks to the FNC system fitted on the Fimap machines, the sound pressure levels of the suction motor are **below 60dB (A)**, i.e. well below the limit of 80dB (A) that is provided by law. As a consequence, the employer does not need to provide the operators with personal hearing protection devices nor to have the co-operators undergo health checks

The FSS and FNC systems are fitted on every FIMAP scrubbing machine

At Fimap, quality is certified, environment is respected and safety is ensured



At Fimap, quality is certified
The ISO 9001:2000 certification is the official recognition that Fimap effectively pursues Global quality as well as, as a consequence, customer's satisfaction, thanks to more and more targeted services.

CE The machine is manufactured in compliance with the 2006/42/EC (MD), 2006/95/EC (LV), 2004/108/CE (EMC) and the technical standards EN 60335-1 and 2 and EN 12100-1 and 2 are applied.



At Fimap, environment is respected
The ISO 14001:2004 certification is the official recognition that Fimap keeps its environmental impact under control and commits itself to further reducing it.



Fimap, an environmentally aware company, uses recyclable materials to manufacture its products. All metal components of the machine underwent protective treatments to ensure long life and oxidation-resistance in full compliance with the Directive ROHS 2002/95/EC. All plastic components are in recyclable polyethylene



At Fimap, safety is ensured
The OHSAS 18001:2007 officially certifies that Fimap is actively committed to protecting its employees' and guests' safety by means of specific procedures, investments and continuous training.

SAFETY REGULATIONS	BATTERY-OPERATED SCRUBBING MACHINES, SWEEPING MACHINES AND SINGLE DISC MACHINES	MAINS-POWERED SCRUBBING MACHINES	PROFESSIONAL VACUUM CLEANERS	MAIN-POWERED SINGLE DISC MACHINES
1 General Safety	EN 60335-1 EN 60335-2-72	EN 60335-1 EN 60335-2-72	EN 60335-1 EN 60335-2-69	EN 60335-1 EN 60335-2-67
2 EMC Electromagnetic compatibility	EN 61000-6-3 EN 61000-6-1 EN 61000-6-4 EN 61000-6-2	EN 55014-1 EN 55014-2	EN 55014-1 EN 55014-2	EN 55014-1 EN 55014-2
EMF Machine-Human Body	EN 50366	EN 50366	EN 50366	EN 50366
3 Vibrations	ISO 5349 – ISO 2631	ISO 5349		ISO 5349
4 Noise Level	EN 60704	EN 60704	EN 60704	EN 60704
5 Noise emissions for use outdoors	2000/14/CE	2000/14/CE		
serial Number Plate	<p>- There must be a serial number plate bearing the CE marking and all the required data according to the product's standards: (Volt, Watt, Weight, IP Degree of protection, Model, Serial number, Max. gradient, Battery weight, Manufacturer's regulations, Year of manufacture)</p> <p>For machines with sweeping unit:</p> <p>- The level of sound power LWA is to be indicated on a label and be legible</p> 	<p>- There must be a serial number plate bearing the CE marking and all the required data according to the product's standards: (Volt, Watt, Weight, IP Degree of protection, Model, Serial number, Max. gradient, Manufacturer's regulations, Year of manufacture)</p> <p>For machines with sweeping unit:</p> <p>- The level of sound power LWA is to be indicated on a label and be legible</p> 	<p>- There must be a serial number plate clearly reporting the CE marking and all required data according to the product's standards: (Volt, Watt, IP Degree of Protection, Model, Serial number, Name of the Manufacturer, Year of manufacture)</p>	<p>- There must be a serial number plate clearly reporting the CE marking and all required data according to the product's standards (Volt, Watt, IP Degree of Protection, Model, Serial number, Name of the Manufacturer, Year of manufacture)</p>

Enjoy 365



FS 100 B



Technical description

SCRUBBING MACHINES	Tanks		Working width mm	Brushes Ø mm (nr.)	Working width up to m²/h	Machine dimensions mm (L x h x w)	Machine weight Kg. (without batteries)
	Solution (L.)	Recovery (L.)					
Maxima							
MMx43 E/B/Bt	40	50	430	430 (1)	1050	1150x1000x445	70
MMx50 E/B/Bt	40	50	510	510 (1)	1200	1178x1000x530	70
Mx50 Bt	60	70	510	510 (1)	2250	1380x1053x530	110
Mx50 Bts	60	70	500	110x500 (2)	2250	1360x1053x510	110
Mx55 Bt	60	70	560	285 (2)	2500	1280x1053x570	110
Mx65 Bt	60	70	660	345 (2)	2900	1360x1053x680	115
SMx60 Bts	80	90	600	150x600 (2)	3000	1448x1095x680	150
SMx65 Bt	80	90	660	345 (2)	3300	1448x1095x680	155
SMx75 Bt	80	90	760	430 (2)	3750	1448x1095x890	160
Gamma							
66/83	90	120	660/830	345 (2)/430 (2)	2640/3320	1600x1100x680/850	185/210
Enjoy							
Ej360 B	90	100	560	560	3360	1200x1570x580	225
Ej365 B	90	100	660	345 (2)	3950	1230x1520x790	230
Ej365 Bs	90	100	600	150x600 (2)	3600	1230x1520x680	220
Magna							
Mg65 B	105	110	660	345 (2)	3960	1664x1330x660	350
Mg70 Bs	105	110	700	110x700 (2)	4200	1664x1330x787	360
Mg75 B	105	110	750	390 (2)	4500	1664x1330x750	370
Mg83 B	105	110	850	430 (2)	5100	1664x1330x850	380
Mg85 B	200	215	850	430 (2)	5500	1960x1500x870	490
Mg85 Bs	200	215	850	210x850 (2)	5500	1960x1500x860	475
Mg100 B	200	215	1020	510 (2)	6500	1960x1500x1120	515
Mg100 Bs	200	215	1000	210x1000 (2)	6500	1960x1500x1115	500
Mg1300 B	360	380	1300	Disc 345 (4) - Cylindrical 300x1110	7800	2250x1880x1340	840
Mg1300 D	360	380	1300	Disc 345 (4) - Cylindrical 300x1110	7800	2250x1880x1340	1100
SWEEPING MACHINES	Working width (with side brush) (mm)		Side brush width (mm)/ Central brush width (mm)	Working width up to m²/h	Debris hopper capacity l	Machine dimensions mm (L x h x w)	Machine weight Kg. (without batteries)
FS50 H/Ht - B/Bt	650		380/500	2275/2600	40	1430x1000x660	70/78 - 67/75
FS60 B	850		400/600	3850	65	1280x1000x780	150
FS70 H/B	930 (1) - 1160 (2)		450/700	6500 - 5500	90	1600x1220x1030	290 - 265
FS71 H/B	930 (1) - 1160 (2)		450/700	6500 - 5500	90	1600x1220x1030	306 - 281
FS72 H/B	930 (1) - 1160 (2)		450/700	6500 - 5500	90	1600x1220x1030	340 - 320
FS80 H/B/D	1000		450/800	8000 - 6000 - 8000	150	1790x1380x1080	651 - 595 - 660
FS100 B/D	1350		500/1000	14150 - 16200	400	2330x1720x1380	960 - 1070
FS120 B/D	1500		500/1200	16250 - 18600	420	2330x1720x1510	990 - 1100
COMMERCIAL VACUUM CLEANERS	Wet&Dry		Voltage V/Hz	Power W	Suction vacuum mm/H ₂ O-mBar-kPa	Machine dimensions mm (L x h x w)	Total tank capacity l./ Air flow l/m-m³/h
FA15 Silenzio	Dry		220-240/50-60	600 direct	1900/190/19	410x390x340	13/1800-110
FA15 Plus	Dry		220-240/50-60	1200 direct	2900/290/29	410x390x340	13/3060-184
FA30	•		220-240/50-60	1100/1350	2200/220/22	430x560x400	25/3240-194
FA60	•		220-240/50-60	1100/1350	2200/220/22	430x760x400	43/3240-194
FA80	•		220-240/50-60	1300/1450	2500/250/25	480x950x580	80/3540-212
FA100	•		220-240/50-60	1300/1450	2500/250/25	480x1050x600	110/3540-212
PCARPET	Wet		220-240/50-60	1300	2500/250/25	720x640x340	20/2640
INDUSTRIAL VACUUM CLEANERS	Wet&Dry		Voltage V/Hz	Power W/HP	Suction vacuum mm/H ₂ O-mBar-kPa	Machine dimensions mm (L x h x w)	Total tank capacity l./ Air flow l/m-m³/h
INV10	Dry		230-240/50-60	1200-1400/1,5	2900/290/29	620x1220x660	50/3060-184
INV20	Dry		230-240/50-60	2200-2700/3,0	2200/220/22	590x1220x830	40/6650-400
INV30	Dry		230-240/50-60	3300-4050/4,5	2200/220/22	660x11590x920	100/10000-600
INV35	•		230-240/50-60	2200/3	2200/220/22	1100x1350x640	60/6700-400
INV35 M	•		230-240/50-60	2200/3	2200/220/22	1100x1350x640	60/6700-400
INV45	•		230-240/50-60	3300/4,5	2200/220/22	1100x1550x640	100/10000-600
INV45 M	•		230-240/50-60	3300/4,5	2200/220/22	1100x1550x640	100/10000-600
INV30 ON	•		230-240/50-60	2200/3	3000/300/30	800x1800x650	100/5000-300
INV40 ON	•		400/50-60	2900/4	3200/320/32	800x1800x650	100/5800-350
INV40	•		400/50-60	2900/4	3200/320/32	1200x1530x650	100/5800-350
INV75	•		400/50-60	5500/7,5	3200/320/32	1200x1530x650	100/9500-570
INV75 S	•		400/50-60	5500/7,5	5000/500/50	1200x1530x650	100/6000-360
SINGLE DISC-MACHINES	Type of drive		Working width mm/ Brush Ø mm	Voltage V/ Frequency Hz	Brush rpm	Power W	Machine dimensions mm (L x h x w)/ Machine weight Kg.
FM43 F	Nylon gearbox		430	220-230/50-60	160	1100/1500	590x1200x430 / 40
FM43 F Plus	Steel gearbox		430	220-230/50-60	160	1100/1500	590x1200x430 / 40
FM4017	Belt		430	220-230/50-60	400	1350	560x1200x450 / 40
FM17 Ds	Belt		430	220-230/50-60	165-330	1350	560x1200x430 / 45
FM1500 S/V	Direct		500	230-240/50-60	1500	DC 1100	610x1260x540 - 640x1260x580 / 38
FM50 B	Direct		510	Battery 24V	1400	-	1400x960x570 / 134
FM70 B	Direct		690	Battery 36V	1300	-	1685x1370x680 / 336



Fimap Spa reserves the right, at anytime, to make technical and/or equipment modifications without prior notification. The images are shown as reference only and are not binding as to the actual design and/or equipment.
Copyright © Fimap 2008 · COD. 301442 · 10/2008

An ISO 9001:2000 Organisation certified by Q.C.B. Italy

www.fimap.com

FIMAP spa - Via Invalidi del Lavoro, 1
37050 S. Maria di Zevio - Verona - Italy
Tel. +39 045 6060411 - Fax +39 045 6060417
E-mail: fimap@fimap.com



For any further information or demonstration of the Professional Line machines, please contact your usual authorized FIMAP dealer

Dealer's stamp

Professional Line



Scrubbing machines



MMx43 B/Bt - MMx50 B/Bt



Mx50 Bt - Mx50 Bts - Mx55 Bt - Mx65 Bt



SMx60 Bts - SMx65 Bt - SMx75 Bt



Gamma 66/83 Bt



Ej360 B - Ej365 B/Bs



Mg65 B - Mg70 Bs - Mg75 B - Mg83 B



Mg 85 B/Bs - Mg100 B/Bs



Mg 1300 B/D

Maxima

Gamma

Enjoy

Magna

Sweeping machines



FS50 H/Ht - FS50 B/Bt



FS60 B



FS70 H/B - FS71 H/B - FS72 H/B



FS80 H/B/D

FS



FS100 B/D



FS120 B/D

Vacuum cleaners



FA15 Silenzio - FA15 Plus



FA30



FA60



FA80



FA100



PCARPET



INV10



INV20



INV30



INV35 - INV45



INV30 ON - INV40 ON



INV40 - INV 75 - INV75 S



FM43 F - FM43 F Plus



FM4017



FM17 DS



FM1500 S/V



FM50 B



FM70 B

FA

INV

FM

Single-disc machines